

VOLKSWAGEN AG EDI Implementation Guidelines

Delivery Note Data VDA 4913/4, Rel. March 1996

From suppliers to brands of Volkswagen AG, including genuine parts drop shipments

Branches and plants in Volkswagen AG which are working on this guide (s. below) accept the delivery and transport data in accordance with VDA 4913 in versions 1, 2, 3 and 4, depending in the application.

This guide also describes the assignment of the VDA 4913 to delivery data in VW's OT drop shipment (OT = VW genuine parts). OT specific remarks are marked.

Deliveries in OT drop shipments to be identified by the unloading point 453TO. Deliveries in OT drop shipments are additionally instructed by EDI message 'OT Streckenabruf DELJIT/CALDEL'.

The VDA 4913 for VW OT drop shipment may be sent by supplier to the IT centre Wolfsburg together with data files for standard logistic process.

The IT Centre Wolfsburg (R11) receives the delivery and transport datas for the plants that belong to the Volkswagen branch (=customer plant) with only one data set name.

When an EDI-transmission is to be declared invalid it can be cancelled by repeating the procedure using the original SLB number and with quantities zero, consecutive transmission numbers can be used; Volkswagen/Audi also accept the repetition of the to be cancelled transmission number.

Please pay attention absolutely, that always for every different VW/Audi packaging type a separate 715th record has to be written. Missing packaging data records lead again and again to wrong packaging stock figures.

You may find detailed descriptions of required structure notation for packages sent to Volkswagen AG on our website. **The regulation for the structured embodiment of packages in the VDA 4913 "Package representation in the delivery note data VDA 4913/4" - is to be followed absolutely!**

The VDA recommendation is available in German under number VDA 4913 at the VDA.

You will find this guide in the most recent version in the Internet under:

http://www.vwgroupsupply.com/b2b/vwb2b_folder/supply2public/en/zusammenarbeit/edi_elektronischer/downloads.html

VOLKSWAGEN AG EDI Implementation Guidelines

Delivery Note Data VDA 4913/4, Rel. March 1996

From suppliers to brands of Volkswagen AG, including genuine parts drop shipments

Record types and record type sequence of delivery note and transport data.

Supplier – VW Delivery note

Rec Type	Ver- sion	M/C	Rep	Data Content
711	02-04	M	1	The header record of the delivery note and transport data set contains transmission related data (once per transmission)
712	02	M	1	One-off data elements of shipment (once per shipment) must follow 711 may follow 714, 715
713	02	M	1	One-off data elements of delivery note (header data) must follow 712 may follow 714, 715
714	02/03	M	R	Item data of delivery note (once per delivery note item) must follow 713 may follow 714, 715
716	02	C	1	Text data on item may follow 714 Audi expects here the "Engineering Change Status" information (not used at present by VW)
715	02/03	M	1	Packaging material data (must follow each delivery note item once) may follow 714, 716 or 715
717	01	C	1	Individual packaging data (not used in the suppliers' transmissions)
718	01	C	R	Production number data (not used in the suppliers' transmissions)
719	02	M	1	Trailer label record containing delivery note and transport data (once per transmission) must follow 715 or 714

Instructions for the column headers and codes of the data fields.

Key

M = Must (Mandatory)

K = May (Conditional)

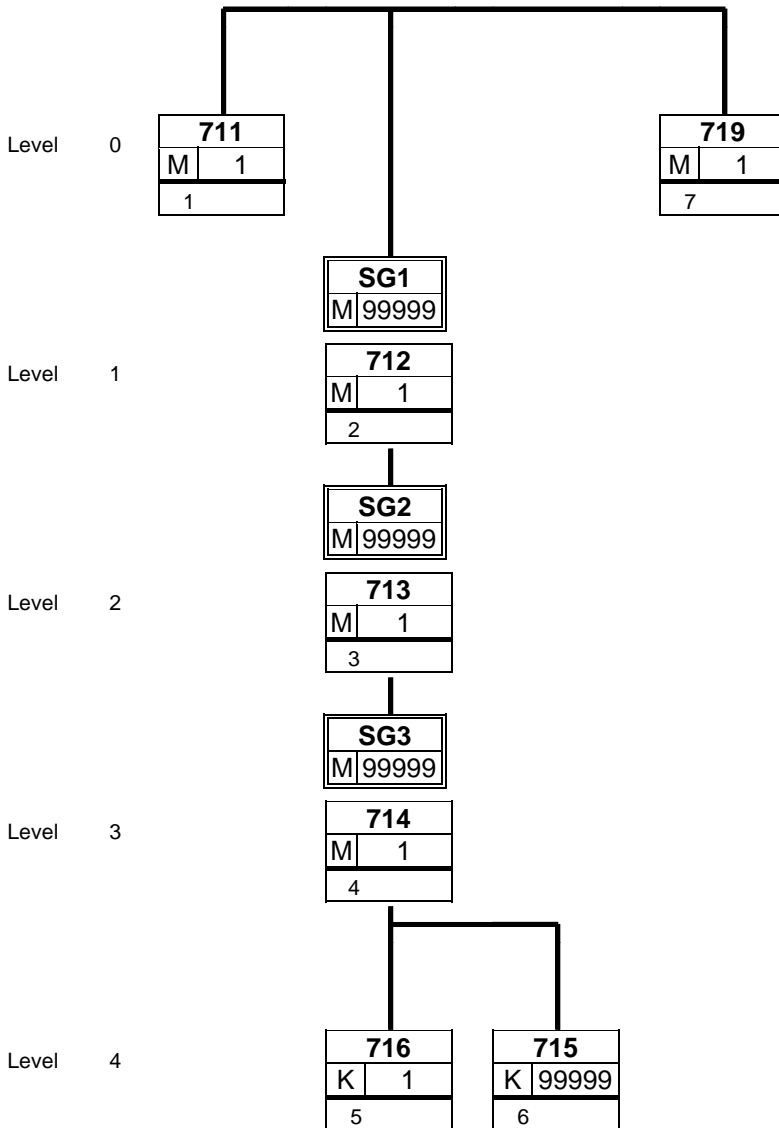
A = Alpha numeric (Text in tables must be left-aligned)

N = Numeric (Text in tables must be right-aligned)

The use of the data elements at VW is defined in the "Verbal descriptions", if use is differing from the VDA-recommendation.

VOLKSWAGEN AG EDI Implementation Guidelines

Volkswagen VDA 4913



All documented Segments/Segmentgroups are in this message structure described. A documented Segment/Segmentgroup shouldn't have to be assigned always.

In contrast to the EDIFACT- Message layout chart the different Segment-version will be displayed explicitly.

Volkswagen VDA 4913; 3

Copyright: VOLKSWAGEN AG, K-SOB3, EDI-Koordination, Th. Sieck

Generated by GEFEG.FX

09.11.2009

3

VOLKSWAGEN AG EDI Implementation Guidelines

Volkswagen VDA 4913

	Seg. Nr.	St. VW	Max Wdh	Segmentname	
	711	1	M	1	Record type 711, version 03, Initial Record containing transmission data head
SG1		M	9999999		
	712	2	M	1	Record type 712, Version 03, One-off transport data, once per shipment.
SG2		M	9999999		
	713	3	M	1	Record type 713, Version 03, One-off data element of the delivery note, once p
SG3		M	9999999		
	714	4	M	1	Record type 714, Version 03, delivery note position data, once per delivery not
	716	5	K	1	Record Type 716, Version 02, Text data.
	715	6	K	9999999	Record 715, version 03, packaging DataFor all packaging material used, as wel
	719	7	M	1	Record Type 719, Version 02, trailer label delivery note and transport data, onc

this message structure described. A documented Segment/Segmentgroup shouldn't have to be assigned always.
In contrast to the EDIFACT- Message layout chart the different Segment-version will be displayed explicitly.

Volkswagen AG EDI Implementation Guidelines

Volkswagen VDA 4913

Counte	No.	Dec.	St	MaxWdh	Ebene	Name
0020	1	711	M	1	0	Record type 711, version 03, Initial Record containing transmission data header of delivery note and transport data

Standard					Implementation	
Bez	Name	von bis	Status	Format	Status	Anwendung / Bemerkung
711_01	Record	1-3	M	N3	M	constant "711"
711_02	Version no.	4-5	M	N2	M	constant "03"
711_03	Data Receiver ID / Customer ID	6-14	M	A9	M	The customer ID agreed with Audi/VW is to be used. The customer ID is not plant related. Different customer Ids for Volkswagen and Audi (not each VW/Audi plant) are possible. VW Sachsen and the Sächsische Automobilbau GmbH each have their own customer IDs , however for these plants, the VW customer no. must be transmitted in the delivery note and transport data. If the VDA 4913 is likewise a copy used between supplier and carrier, the VW/ Audi ID can be put here as data receiver. In item 09 in this case the carrier ID should be entered in the message and sent to the carrier as well as to VW/ Audi.
711_04	Data sender ID / Supplier ID	15-23	M	A9	M	(an9) Enlarged supplier number including identifier for supplier plant. The supplier ID is to be sent always as 9-digits. If suppliers plant index is not used for differentiation, the digits 8+9 are to be filled with '00' so that the supplier ID can be processed correctly by VW/Audi. Without index or with use of plant index 9-digits without separators. If the plant index is used, the supplier ID is also taken over with 9-digits (without separators). (an6) valid for suppliers with supplier number in format used up to now This ID is received by Volkswagen/ Audi as 5-digits without index or with use of plant index 6-digits without separators. When the VDA 4913 is registered by the carrier (grouped load) the supplier ID of the data registering carrier is transmitted here. Enlarged carrier ID is 9 digits, 6 digits for carriers with carrier ID in format used up to now. The supplier ID is entered through the carrier in the SA 713, delivery note data.
711_05	Old transmission no.	24-28	M	N5	M	For description, see New transmission number. In the first transmission the old transmission number = 00000. Right-aligned entry with preceding zeros.
711_06	New transmission no.	29-33	M	N5	M	The data author allocates a transmission number (new) within his application for each transmission creation process. Because the data author gives a new transmission number each time, as well as that of the previous transmission creation process within the application used (as old number), the receiver can check the completeness of the transmissions in each application. Therefore no complete ascending number sequence is necessary. Right-aligned entry with preceding zeros. Examples for both old and new transmission numbers: Start: 00000 00001 or 00000 00017 Routine: 00019 00020 or 88051 88061 Reset: 99999 00001 or 89361 00011
711_07	Transmission date	34-39	M	N6	M	Form: YYMMDD
711_08	Sub-supplier no.	40-48	K	A9	K	Not used by VW/ Audi.
711_09	Carrier ID	49-57	K	A9	K	an9) Enlarged carrier ID

Volkswagen AG EDI Implementation Guidelines

Volkswagen VDA 4913

Standard				Implementation	
Bez	Name	von bis	Status	Format	Status Anwendung / Bemerkung
					(an6) valid for carrierh with ID in format used up to now If a copy of the VDA 4913 is likewise used between supplier and carrier, the carrier ID must be entered in the messages sent both to the carrier and to VW/Audi. If applicable, the content in the rule will be the same as the field content in record type 712, item13.
711_10	Key to stocklist	58	K	A1	K Not used by VW/Audi.
711_11	Delivery code	59	K	A1	K Not used by VW/Audi.
711_12	Empty	60-128	M	A69	M Filled in with blanks.

Bemerkung:

Beispiel:

71104100474 0190613002306823069070214 10151

Volkswagen AG EDI Implementation Guidelines

Volkswagen VDA 4913

Counte	No.	Dec.	St	MaxWdh	Ebene	Name
0030		SG1	M	9999999	1	712-SG2
0040	2	712	M	1	1	Record type 712, Version 03, One-off transport data, once per shipment.

Standard					Implementation	
Bez	Name	von bis	Status	Format	Status	Anwendung / Bemerkung
712_01	Record	1-3	M	N3	M	constant "712"
712_02	Version no.	4-5	M	N2	M	entry = 03
712_03	Shipment Load Reference Number	6-13	M	A8	M	The SLB number must be clearly marked on the bill of lading. instead of the bill of lading the shipment order according to VDA 4922 is used, the SLB number is entered in field 8 of the shipment order. The reference number, which the loader allocates to the shipment/ load; right-aligned entry with preceding zeros. Reuse of this number is not allowed within a year. The restrictions described below are to be observed when allocating number. For each goods receipt plant at least one SLB number is allocated.
712_04	Plant supplier	14-16	K	A3	R	(an2) identifier for supplier plant (with enlarged supplier number) = code of suppliers plant from which the goods are delivered (an1) valid for suppliers with supplier number in format used up to now The plant identifier / supplier index for the delivering supplier plant allocated by VW/ Audi is entered in left-alignment. If in the forecast delivery schedule an agreed collective index is transmitted for all supplying plants of a supplier, this may not be used in the delivery note transmission. In our goods receipt system we check, whether the forwarded index is permissible. An unauthorised deviation from the agreed supplier index leads to major additional expenditure for Volkswagen/Audi and errors in the subsequent systems (eg. loading equipment control), therefore changes must be agreed upon in advance with the relevant managers or creditors at VW/ Audi!
712_05	Carrier	17-30	M	A14	M	Name and/or transport company ID, under which transport is implemented.
712_06	Carrier transfer date	31-36	M	N6	M	Date of shipment transfer to the carrier. Form: YYMMDD
712_07	Carrier transfer time	37-40	M	N4	M	Time of shipment transfer to the carrier. Form: HHMM
712_08	Gross shipment weight	41-47	M	N7	M	Weight of goods including packaging and / or loading equipment but excluding the carriers' containers (instruction from bill of lading), unit of quantity in kg, entry is right-aligned with preceding zeros, no decimal place. The field content must be equal to the given weight on the bill of lading.
712_09	Net shipment weight	48-54	K	N7	K	Goods weight including packaging without loading equipment and carriers' containers. Unit of quantity in kg, entry is right-aligned with preceding zeros, no decimal place.
712_10	Pre-payment of charges key	55-56	K	N2	K	Indicates, who pays the freight charges. 01 = carriage unpaid 03 = carriage paid
712_11	Carrier transmission key	57	K	A1	K	In the case of direct delivery code 'D' is used and not the code in the VDA recommendation. In this case Volkswagen/ Audi receive no supplier data from the carrier, the cargo data fields must therefore be carefully and completely filled in by the suppliers. Encoded form, 1 = transport transmission to carrier takes place according to VDA 4913. In this case the carrier ID

Volkswagen AG EDI Implementation Guidelines

Volkswagen VDA 4913

Standard					Implementation																						
Bez	Name	von bis	Status	Format	Status	Anwendung / Bemerkung																					
712_12	Number of packages	58-61	K	N4	K	(record type 711, item 09) must be filled in. The number which is entered in the shipment contained loading unit. Entry is right-aligned with preceding zeros, no decimal place.																					
712_13	Transport partner ID	62-75	K	A14	K	(an9) Enlargeged carrier ID (an6) valid for carrierh with ID in format used up to now If shipment is transported by area carrier, VW/ Audi carrier code is to be given (as for field 10 shipping order/ bill of lading). The supplier must obtain the carrier code (point of consolidation) from the relevant area carrier.																					
712_14	Key to means of Transport	76-77	M	N2	M	01 = Vehicle Registration Plate 02 = Freight List number 07 = Express parcel number 08 = Railcar number 09 = Parcel number 10 = Flight number and/ or Air waybill no. 11 = Ship name																					
712_15	Means of transport number	78-102	M	A25	M	Depending of the means of transport the registration numbers for the vehicle, truck or swap body are to be entered as follows : <table border="0" style="width: 100%;"> <tr> <td>the trailer registration no.</td> <td>Position 1 - 12</td> <td>Position 14 - 25</td> </tr> <tr> <td>overland transport (01)</td> <td>truck number plate</td> <td>client code</td> </tr> <tr> <td>railway(08) number</td> <td>traktor number plate</td> <td>trailer code carriage</td> </tr> <tr> <td>shipment(11) number</td> <td>name of the boat</td> <td>container</td> </tr> <tr> <td>airfreight(10) number</td> <td>flight number</td> <td>airbill</td> </tr> <tr> <td>postal package(09)</td> <td>postal package number,</td> <td></td> </tr> <tr> <td>UPS-Tracking-Number etc.</td> <td></td> <td></td> </tr> </table>	the trailer registration no.	Position 1 - 12	Position 14 - 25	overland transport (01)	truck number plate	client code	railway(08) number	traktor number plate	trailer code carriage	shipment(11) number	name of the boat	container	airfreight(10) number	flight number	airbill	postal package(09)	postal package number,		UPS-Tracking-Number etc.		
the trailer registration no.	Position 1 - 12	Position 14 - 25																									
overland transport (01)	truck number plate	client code																									
railway(08) number	traktor number plate	trailer code carriage																									
shipment(11) number	name of the boat	container																									
airfreight(10) number	flight number	airbill																									
postal package(09)	postal package number,																										
UPS-Tracking-Number etc.																											
712_16	Code for item 712, Pos. 17	103	K	A1	K	1 = The post-code is entered in field 17.																					
712_17	Content in accordance with item in 712, Pos. 16	104-111	K	A8	K	The post-code (the street address) of the dispatching plant is given in left-alignment.																					
712_18	Target Arrival date	112-117	K	N6	K	The date is only to be given in the transmission of the VDA 4913 from the supplier to the carrier. The target arrival date corresponds to the release date in the forecast delivery schedule (arrival date). Form: YYMMDD																					
712_19	Target Arrival time	118-121	K	N4	K	Not used by VW/ Audi.																					
712_20	Load metre	122-124	K	N2,1	K	Not used by VW/ Audi																					
712_21	Lorry type code	125	K	N1	K	Not used by VW/ Audi.																					
712_22	Empty	126-128	M	A3	M	Filled in with blanks.																					

Bemerkung:

Beispiel:

712030001576300 10151 07021416220000176000017601 000110151 01Z-ZS 226
1 0702151622

Volkswagen AG EDI Implementation Guidelines

Volkswagen VDA 4913

Counte	No.	Dec.	St	MaxWdh	Ebene	Name
	0030	SG1	M	9999999	1	712-SG2
	0050	SG2	M	9999999	2	713-SG3
	0060	713	M	1	2	Record type 713, Version 03, One-off data element of the delivery note, once per delivery note

Standard					Implementation	
Bez	Name	von bis	Status	Format	Status	Anwendung / Bemerkung
713_01	Record	1-3	M	N3	M	constant "713"
713_02	Version no.	4-5	M	N2	M	Entry = 03
713_03	Delivery note number	6-13	M	N8	M	Identification number that the supplier assigns to a delivery note, entry is right-aligned with preceding zeros, may not be reused within a year.
713_04	Despatch date	14-19	M	N6	M	Form: YYMMDD
713_05	Unloading point	20-24	M	A5	M	The unloading point transmitted in messages and documents to VW/ Audi should be as specified in the EDI forecast delivery schedule and in the daily call off. The unloading point should be taken from the delivery classification on paper and entered without separators: 101-01 => 10101 101/74 => 10174 Orders which do not have a clearly identifying material receiving location have to be arranged with the person in charge for MAT data at VW/Audi.
713_06	Dispatch type	25-26	M	N2	M	01 = HGV (Sub contractor) 02 = HGV customer 03 = HGV carriage 04 = HGV Rail 05 = Own HGV (Supplier) 08 = Railcar 09 = Post shipment 10 = Air Freight 11 = Sea freight 20 = Private package service
713_07	Customer reference number (LAB)	27-30	K	A4	K	From the forecast delivery schedule, record type 512, item 12. The customer reference consists of a 2-digit reference for the scheduling plant and a two digit reference for the controller.
713_08	Contract/Order no.	31-42	K	A12	R	In the delivery note and transport data only the order number given in the forecast delivery schedule may be entered.
713_09	Process code	43-44	K	N2	K	Only used by external agent, remains blank with direct data exchange between supplier and VW/Audi
713_10	Empty	45-48	M	A4	M	Filled in with blanks.
713_11	Customer plant	49-51	M	A3	M	The two-digit plant code is to be given. Entry is left-aligned!
713_12	Consignment	52-59	K	N8	K	Not used by VW/ Audi.
713_13	Goods receiver ID	60-68	K	A9	K	Is not used in the standard logistic process at VW/ Audi.
713_14	Empty 2	69	M	A1	M	Filled in with blanks.
713_15	Ship to/ Customer storage location	70-76	K	A7	K	The storage location indicate the buildings, to which the deliveries should be made and covers several unloading points. Depending on the application, it is only relevant to Audi at the moment and is sent to the supplier via VDA 4905/1 or VDA 4915. The storage location is an additional piece of information to the article number and is not a key

Volkswagen AG EDI Implementation Guidelines

Volkswagen VDA 4913

		Standard			Implementation	
Bez	Name	von bis	Status	Format	Status	Anwendung / Bemerkung
						<p>term. Entry is left-aligned.</p> <p>The "ship to" / storage location indicates the building / external service provider, to which the deliveries should be made and covers several unloading points.</p> <p>The first three digits of the stock location (70 -72) is the Ship-To / receipt location code. The receipt location is to be printed by the supplier on the labels and shipment bills (VDA 4912, VDA 4939) as a parcels address. With the Ship-To code the TSB-generator determines the aside delivery address for the TSB-print in the AMES-T-process .</p> <p>The postal addresses are available for download in the internal area of the supplier platform. The Ship-To / receipt location is defined and related by the plant logistics of a brand. It is a supplementary information on the code number and no disposition keyword. Two different receipt location keys can't be contained in one shipment (under the SA 712) because the TSB-generator can print only one postal address onto the shipment bill.</p> <p>On position 4 - 7 the stock location of Audi, Neckarsulm, has to be transmitted if it was transmitted in the delivery instruction (VDA 4905, SA 512, Pos. 19)</p>
713_16	Supplier ID	77-85	M	A9	M	<p>The 9 or 7 digit supplier ID with supplier plant index is only inserted in this field if the of VDA 4913 is registered by the carrier (grouped loading).</p> <p>(an9) Enlargeged carrier ID (an6) valid for carrierh with ID in format used up to now</p>
713_17	Point of assembling	86-99	K	A14	K	<p>Currently only used by Audi-Neckarsulm, transmitted in the VDA 4905 / VDA 4915.</p> <p>Alphanumeric without spaces; entry is left-aligned.</p>
713_18	Release no.	100-103	K	A4	K	Not used by VW/Audi.
713_19	Customer reference	104-109	K	A6	K	Not used by VW/Audi.
713_20	Customer reference number	110-123	K	A14	K	Not used by VW/Audi.
713_21	Empty	124-128	M	A5	M	Filled in with blanks.

Bemerkung:

Beispiel:

7130380183970070214KOK0303KE54EN10312323

14

K03

Volkswagen AG EDI Implementation Guidelines

Volkswagen VDA 4913

Counte	No.	Dec.	St	MaxWdh	Ebene	Name
0030		SG1	M	9999999	1	712-SG2
0050		SG2	M	9999999	2	713-SG3
0070		SG3	M	9999999	3	714-716-715
0080	4	714	M	1	3	Record type 714, Version 03, delivery note position data, once per delivery note position.

Standard					Implementation	
Bez	Name	von bis	Status	Format	Status	Anwendung / Bemerkung
714_01	Record	1-3	M	N3	M	constant "714"
714_02	Version number	4-5	M	N2	M	Entry = 03
714_03	Customer reference number	6-27	M	A22	M	As transmitted in the forecast delivery schedule, the reference numbers are to be entered in the delivery note and transport data and on all paper documents in The print form. Spaces must be used. The reference number always begins with a blank.
714_04	Supplier reference number	28-49	M	A22	M	Is not used in the standard logistic process atVW/ Audi.
714_05	Country of origin	50-52	M	N3	M	Encoded Form, see Appendix 10, Item 04.
714_06	Delivery quantity 1	53-65	M	N10,3	M	Delivery quantity of the delivery note item in the quantity unit of the forecast delivery schedule, right-aligned with preceding zeros, 3 decimal places. Note: The decimal places must be recognisable on the delivery note.
714_07	Unit of quantity 1	66-67	M	A2	M	ST = Piece SA = Set M = Metre M2 = Square Metre M3 = Cubic Metre L = Litre KG = Kilogram T = Can Entry is left-aligned
714_08	Delivery quantity 2	68-80	K	N10,3	N	Not used. N Not used
714_09	Unit of quantity 2	81-82	K	A2	K	
714_10	VAT rate	83-85	K	N2,1	K	Not used by VW/ Audi.
714_11	Empty 1	86	M	A1	M	Filled in with blanks.
714_12	Delivery note item number	87-89	M	N3	M	Item of a delivery note, entry is right-aligned with preceding zeros; no decimal places. Permissible value range 001-999.
714_13	Release key	90	K	A1	K	Not used by VW/ Audi.
714_14	Batch number	91-105	K	A15	K	Identification Number which the supplier allocates to a batch, this is only relevant for 'batch suppliers'. If a delivery contains a batch for an article number the batch number must be given in addition to the delivery line item number. (See example). If several batches of the same article number are contained in a single delivery, a separate delivery line item number (Rec. no. 714) must be transmitted for each batch. Special charcaters are not permitted: *,#,ß,{,},/,(),[,],ä,ü,ö

Volkswagen AG EDI Implementation Guidelines

Volkswagen VDA 4913

Standard					Implementation	
Bez	Name	von bis	Status	Format	Status	Anwendung / Bemerkung
						Record type Supplier Art. No. Item-No. Quantity Batch No. Example: 714 191 867 765 AL 001 500 0111 714 191 867 765 AL 002 200 0112
714_15	Code usage	106	M	A1	M	S or blank = General series E = Spare part M = first model
714_16	Dangerous goods code	107-114	K	A8	K	(an4) UN dangerous good number. in the form UNnnnn (digits 2+4) UN dangerous good number from the regulation of the internal and transborder transport of dangerous goods on the road and with railroad (GGVSE, attachment 1). The Dangerous Goods Code must be available and correctly filled to the ASNs of dangerous goods. The TSB generator needs the UNDG Nr for the print of correct shipment documents. UNDG Nr is currently not used by VW/Audi in the electronic processing of received goods. Indications in accordance with GGVS: digits 107-110 = class digits 111-112 = digit digits 113-114 = letter
714_17	Preference status	115	M	A1	M	Encoded form, see Appendix 10, Item 08.
714_18	Dutiable goods	116	M	A1	M	Encoded Form: Blank = no dutiable goods 1 = dutiable goods
714_19	Empty 2	117	M	A1	M	Filled in with blanks.
714_20	Inventory status	118	M	A1	M	Only for external agent usage.
714_21	Modified version code	119-120	M	A2	M	Relegates on state of engineering change and/or expiry date in field 716, Position 3,TEXT1. V_ relegates on expiry date in TEXT1, Position 1-6. _T relegates on state of engineering change in TEXT1 , Position 8-23. VT relegates on expiry date (Position 1-6) and state of engineering change (from 8. Position) in TEXT1, Position 7 = semicolon
714_22	Original delivery note number	121-128	K	A8	K	In the standard logistic process at VW/ Audi the original delivery note number is only for logistics service provider usage.

Bemerkung:

Beispiel:

714033C0 854 950 9B9 004000000300000ST ST 010 00043458
10 S

Volkswagen AG EDI Implementation Guidelines

Volkswagen VDA 4913

Counte	No.	Dec.	St	MaxWdh	Ebene	Name
0030		SG1	M	9999999	1	712-SG2
0050		SG2	M	9999999	2	713-SG3
0070		SG3	M	9999999	3	714-716-715
0100	5	716	K	1	4	Record Type 716, Version 02, Text data.

Standard					Implementation	
Bez	Name	von bis	Status	Format	Status	Anwendung / Bemerkung
716_01	Record	1-3	M	N3	M	constant "716"
716_02	Version number	4-5	M	N2	M	Constant = 02
716_03	Text 1	6-45	M	A40	M	<p>Parts generation status and expiry date best before date, trigger from SA 714, Position 21 = 1 appointment = V Format: n6 YYMMDD, Position 1 - 6</p> <p>Parts generation status, trigger from SA 714, Position 21 = 2 appointment = T Format: an15, Position 8 - 22</p> <p>Parts generation stand 10 digit value that consists of the following parts Pos. 8 - 10 generation status (GS-status), e.g. 01S Pos. 11 - 13 hardware status (HW-status), e.g. H01 Pos. 14 - 17 software status (SW-status), e.g. 0010 10 digits must be transmitted always. Missing values are to be filled with blanks.</p> <p>If parts generation status and expiry date are transmitted, a semicolon (;) should be placed as a separator.</p>
716_04	Text 2	46-85	K	A40	K	<p>Is not used in the standard logistic process atVW/ Audi. OT drop shipments: OT purchaser' s order number (20 digits, left justified) out of 'OT Streckenabruf' DELJIT/CALDEL. The OT purchaser' s order number has to be annotated on the VDA delivery note.</p>
716_05	Text 3	86-125	K	A40	K	<p>Is not used in the standard logistic process at VW/ Audi. OT drop shipments: Final purchaser' s order number (20 digits, left justified) out of 'OT Streckenabruf' DELJIT/CALDEL. Final purchaser' s order number has to be annotated on the VDA delivery note.</p>
716_06	Empty	126-128	M	A3	M	<p>Mit BLANKS gefüllt. Filled in with BLANKS.</p>

Bemerkung:

Beispiel:

71602070201

Volkswagen AG EDI Implementation Guidelines

Volkswagen VDA 4913

Counte	No.	Dec.	St	MaxWdh	Ebene	Name
0030		SG1	M	9999999	1	712-SG2
0050		SG2	M	9999999	2	713-SG3
0070		SG3	M	9999999	3	714-716-715
0110	6	715	K	9999999	4	Record 715, version 03, packaging Data For all packaging material used, as well as auxiliary packaging, a 715th record must be transmitted. Subsequent records and contents in representation of different forms of loading units are explained in the EDI Implementation Guidelines, detailed description and examples under "Instruction for packages in the delivery note and transport data"

Standard					Implementation	
Bez	Name	von bis	Status	Format	Status	Anwendung / Bemerkung
715_01	Record	1-3	M	N3	M	constant "715"
715_02	Version number	4-5	M	N2	M	Entry = 03
715_03	Customer packaging type coded	6-27	M	A22	M	The packaging type is given by VW/ Audi in the first information, as well as in the changes in the packaging instruction and in the forecast delivery schedule as shown in the following examples: Examples: VW0001 not SK-V-7143 VW0012 not 70-A-110671 007255 not 7-v-7255 010028 not 70-A-010028 0110302 not 7-V-11030/2 110656 not 70-A-110656 FA0011 not FA-11 In the case of non-returnable packaging or returnable packaging from 3rd party, the partners may agree a code: => Coding: encoded Form, see instruction
715_04	Supplier packaging type coded	28-49	M	A22	M	Identification Number, which the supplier allocates to a packaging type. Not used by VW/Audi.
715_05	Number of packaging	50-62	M	N13	M	Number of packaging for each type. Right-aligned entry with preceding zeros, no decimal place. Number of packaging with quantity (quantity >0 of record type 714, Pos. 6): Max. 99 packages (format n..2) Number of packaging without quantity (quantity <=0 of record type 714, Pos. 6): Max. 999 packages (format n..3) Additional auxiliary packaging used (eg. aluminium frame) is likewise added (without content).
715_06	Delivery note item no.	63-65	M	N3	M	Content of the field should be in the item number of record 714, applying to the packaging type. Entry is right-aligned with preceding zeros.
715_07	Maximum quantity	66-78	K	N10,3	R	The actual maximum quantity always applies to a supply unit (a package), entry is right-aligned with preceding zeros, 3 decimal places. Quantity indication is in the quantity unit of record type 714, item 07. For auxiliary packaging material the maximum quantity = 0

Volkswagen AG EDI Implementation Guidelines

Volkswagen VDA 4913

Standard					Implementation	
Bez	Name	von bis	Status	Format	Status	Anwendung / Bemerkung
715_08	Package number from 79-87		K	A9	K	Detailed description and examples in the EDI implementation Guidelines under "Regulation for Representation of Package in Delivery Note and Transport Data". Number may not be reused within the year. Entry is left-aligned.
715_09	Package number to	88-96	K	A9	K	As above. If this element is used, the number sequence between PACKAGING PIECE NUMBER FROM and PACKAGING PIECE NUMBER TO must be in ascending numerical order.
715_10	Packaging dimensions	97-108	K	N12	K	Not used by VW/ Audi.
715_11	Stacking factor	109	K	N1	K	Indication of permitted stacking capability, of the unit given in packaging type Encoded form: 1 = single layer, 2 = two layers, etc
715_12	Warehouse release number	110-124	K	A15	K	Only for logistic service provider
715_13	Label indicator	125	K	A1	R	Barcode indicator of the label (VDA 4902) in data element PACKAGE NO. Valid Entry: G = Mixed Packages (with sub-packages and different reference numbers) M = Master-Label (with sub-packages and the same reference numbers) S = Single-Label (1 package) Auxiliary packaging material has no package number. Detailed description and examples in the EDI implementation Guidelines under "Regulation for Representation of packages in the delivery note and transport data".
715_14	Packaging code	126	K	A1	R	Valid entries: blank = Returnable packaging M = Returnable packaging E = one way packaging, not returnable
715_15	Property code	127	K	A1	R	Indication only for returnable packaging. Valid entries: Blank = Only when one way packaging is used and indicated in SA 715, Pos. 15 = E K = Returnable packaging property of customer L = Returnable packaging, property of supplier, must be returned
715_16	Empty	128	M	A1	M	Filled in with blanks.

Bemerkung:

Beispiel:

71503114845

S

00000000000010100000000300000202075887

VOLKSWAGEN AG EDI Implementation Guidelines

Delivery Note Data VDA 4913/4, Ausg. März 1996

From suppliers to Volkswagen AG, including original parts

Code Index

Item	Code	Code Content	in record type																																				
04	Country of Origin	<p>3-digit numerical code, see countries' index for the foreign trade statistics EC regulation from 1975, permissible 000-999.</p> <p>Available from: Metzler-Poeschel Hermann Leins Postfach 11 52 72127 Kusterdingen Fax: 07071/33653</p> <p>Extract:</p> <table> <tr> <td>France</td> <td>= 001</td> <td>Spain</td> <td>= 011</td> </tr> <tr> <td>Belgium</td> <td>= 002</td> <td>Sweden</td> <td>= 030</td> </tr> <tr> <td>Netherlands</td> <td>= 003</td> <td>Switzerland</td> <td>= 036</td> </tr> <tr> <td>Germany</td> <td>= 004</td> <td>Austria</td> <td>= 038</td> </tr> <tr> <td>Italy</td> <td>= 005</td> <td>Hungary</td> <td>= 064</td> </tr> <tr> <td>England</td> <td>= 006</td> <td>USA</td> <td>= 400</td> </tr> <tr> <td>Rep. Ireland</td> <td>= 007</td> <td>Canada</td> <td>= 404</td> </tr> <tr> <td>Denmark</td> <td>= 008</td> <td>Japan</td> <td>= 432</td> </tr> <tr> <td>Portugal</td> <td>= 010</td> <td>other countries</td> <td>= 999</td> </tr> </table>	France	= 001	Spain	= 011	Belgium	= 002	Sweden	= 030	Netherlands	= 003	Switzerland	= 036	Germany	= 004	Austria	= 038	Italy	= 005	Hungary	= 064	England	= 006	USA	= 400	Rep. Ireland	= 007	Canada	= 404	Denmark	= 008	Japan	= 432	Portugal	= 010	other countries	= 999	714 Pos. 50-52
France	= 001	Spain	= 011																																				
Belgium	= 002	Sweden	= 030																																				
Netherlands	= 003	Switzerland	= 036																																				
Germany	= 004	Austria	= 038																																				
Italy	= 005	Hungary	= 064																																				
England	= 006	USA	= 400																																				
Rep. Ireland	= 007	Canada	= 404																																				
Denmark	= 008	Japan	= 432																																				
Portugal	= 010	other countries	= 999																																				
08	Preference Status	<p>G = Goods of EU origin; all countries with preferential = agreement</p> <p>W = Goods of EC origin; preferential agreement for goods transportation within the EFTA states</p> <p>F = Finland</p> <p>C = Switzerland</p> <p>O = Austria</p> <p>S = Sweden</p> <p>N = Norway</p> <p>I = Iceland</p> <p>X = not yet checked, no goods origin</p>	714 Pos. 115																																				

VOLKSWAGEN AG EDI Implementation Guidelines

Delivery Note Data VDA 4913/4, Ausg. März 1996

From suppliers to Volkswagen AG, including original parts

11	Packaging Codes	for disposable and re-useable packaging <u>Pallets</u> 0000PAL 120 x 80 cm, flat pallet up to 15 cm height 0001PAL 120 x 80 cm, stacked up to 50 cm 0002PAL 120 x 80 cm, stacked up to 100 cm 0003PAL 120 x 80 cm, stacked up to 150 cm 0004PAL 120 x 80 cm, stacked up to 200 cm 0005PAL 120 x 100 cm, stacked up to 50 cm 0006PAL 120 x 100 cm, stacked up to 100 cm 0007PAL 120 x 100 cm, stacked up to 150 cm 0008PAL 120 x 100 cm, stacked up to 200 cm <u>Boxes, crates, packets</u> 0001SCH Dimensions up to 30 x 20 x 14 cm 0002SCH Dimensions up to 30 x 20 x 28 cm 0003SCH Dimensions up to 40 x 30 x 14 cm 0004SCH Dimensions up to 40 x 30 x 28 cm 0005SCH Dimensions up to 50 x 30 x 20 cm 0006SCH Dimensions up to 50 x 50 x 50 cm 0007SCH Dimensions up to 58 x 48 x 36 cm 0008SCH Dimensions up to 60 x 40 x 14 cm 0009SCH Dimensions up to 60 x 40 x 28 cm 0010SCH Dimensions up to 80 x 60 x 40 cm 0011SCH Dimensions up to 98 x 58 x 36 cm 0012SCH Dimensions up to 100 x 60 x 73 cm 0013SCH Dimensions up to 120 x 78 x 110 cm 0014SCH Dimensions up to 120 x 80 x 40 cm 0015SCH Dimensions up to 120 x 80 x 90 cm 0016SCH Dimensions up to 120 x 100 x 90 cm Only used in exceptional circumstances!!! <u>other packaging</u> 0000SON other disposable packaging, no further details 0001SON other disposable packaging > 1 m ³ , no further details 0002SON other disposable packaging < 1 m ³ , no further details 0000BEH other liquid container, packing drum, can, sealed tin container (hobbock), tank, cargo container no further details 0000FAS barrel, no further details 0000SAC bag, sack no further details 0000BLE sheet metal packaging, sheet metal coils, no further details 0000BUN bunches, no further details 0000UMR hoop, tightening strap, no further details	715 Pos. 6-27
----	-----------------	--	------------------